

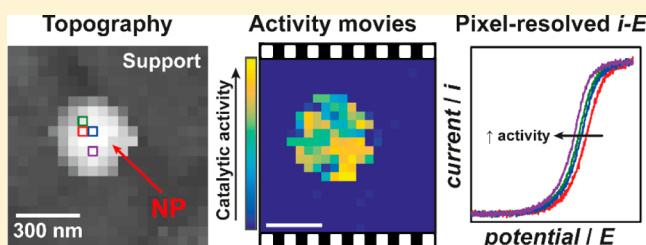
Nanoscale Structure Dynamics within Electrocatalytic Materials

Cameron L. Bentley,^{*,†} Minkyung Kang,[†] and Patrick R. Unwin^{*,†}

Department of Chemistry, University of Warwick, Coventry CV4 7AL, U.K.

Supporting Information

ABSTRACT: Electrochemical interfaces used for sensing, (electro)catalysis, and energy storage are usually nanostructured to expose particular surface sites, but probing the intrinsic activity of these sites is often beyond current experimental capability. Herein, it is demonstrated how a simple meniscus imaging probe of just 30 nm in size can be deployed for direct electrochemical and topographical imaging of electrocatalytic materials at the nanoscale. Spatially resolved topographical and electrochemical data are collected synchronously to create topographical images in which step-height features as small as 2 nm are easily resolved and potential-resolved electrochemical activity movies composed of hundreds of images are obtained in a matter of minutes. The technique has been benchmarked by investigating the hydrogen evolution reaction on molybdenum disulfide, where it is shown that the basal plane possesses uniform activity, while surface defects (i.e., few to multilayer step edges) give rise to a morphology-dependent (i.e., height-dependent) enhancement in catalytic activity. The technique was then used to investigate the electro-oxidation of hydrazine at the surface of electrodeposited Au nanoparticles (AuNPs) supported on glassy carbon, where subnanoentity (i.e., sub-AuNP) reactivity mapping has been demonstrated. We show, for the first time, that electrochemical reaction rates vary significantly across an individual AuNP surface and that these single entities cannot be considered as uniformly active. The work herein provides a road map for future studies in electrochemical science, in which the activity of nanostructured materials can be viewed as *quantitative movies*, readily obtained, to reveal active sites directly and unambiguously.



INTRODUCTION

Techniques that can resolve nanoscale structure–activity at complex electrochemical interfaces and ensembles are much needed in order to understand the behavior of functional nanostructured electrodes^{1,2} that have applications ranging from (electro)catalysis and energy storage^{3–6} to biomedical and environmental sensing.^{7,8} In this work, we demonstrate how a simple meniscus imaging probe, based on a single-channelled nanopipet (inner diameter, $d \approx 30$ nm), can be used to carry out *synchronous electrochemical/topographical imaging* with high spatial resolution to provide unprecedented views of electrocatalytic processes in action. This approach provides unambiguous quantitative information on the intrinsic activity of characteristic surface sites (e.g., step edge vs terrace sites on an extended surface and activity distributions within a single catalytic nanoparticle), directly highlighting structural controls on (electro)catalytic activity.

Among a limited set of techniques for mapping (electro)-chemical activity at the nanoscale,^{9–15} scanning electrochemical probe microscopy (SEPM) methods are presently gaining attention.^{14,15} The most commonly utilized SEPM technique, scanning electrochemical microscopy (SECM), has recently been employed to study the activity of electrocatalytic nanomaterials in the tens to hundreds of nm size range.^{16–19} However, for these applications and most others, the technique operates in a constant plane scanning mode with no positional feedback of the tip with respect to the surface of interest. Such measurements are difficult to implement and analyze (due to

piezoelectric positioner drift, etc.), and no topographical information is obtained. This limitation can be overcome to some extent through the use of dual redox mediators (one to image topography, the other to measure activity)²⁰ or the integration of SECM with other scanning probe techniques such as atomic force microscopy (AFM)^{21,22} or scanning ion conductance microscopy (SICM).^{23–26} However, fabricating reproducible nanoelectrode probes is nontrivial and time-consuming, and this is even more complicated when multi-channel probes are employed.¹⁵

It is important to point out that in SECM substrate activity is measured *indirectly*, often by monitoring the spatially dependent fluxes of reactant, product, or intermediates from the substrate at the tip,^{15–18} and thus suffers from diffusional broadening, exacerbated at the nanoscale, where neighboring sites on a surface may interact (diffusional cross-talk). This makes “single-entity” activity mapping within an ensemble of active materials very challenging. Furthermore, the need to immerse the entire surface during measurement and the long scan-times that are used (typically at least several tens of minutes for a single image frame) complicates sample preparation and renders the technique susceptible to surface-aging effects at the sample and the tip, induced by electrolyte exposure and the electrochemical process that has to be run for a long time.

Received: September 1, 2017

Published: October 23, 2017

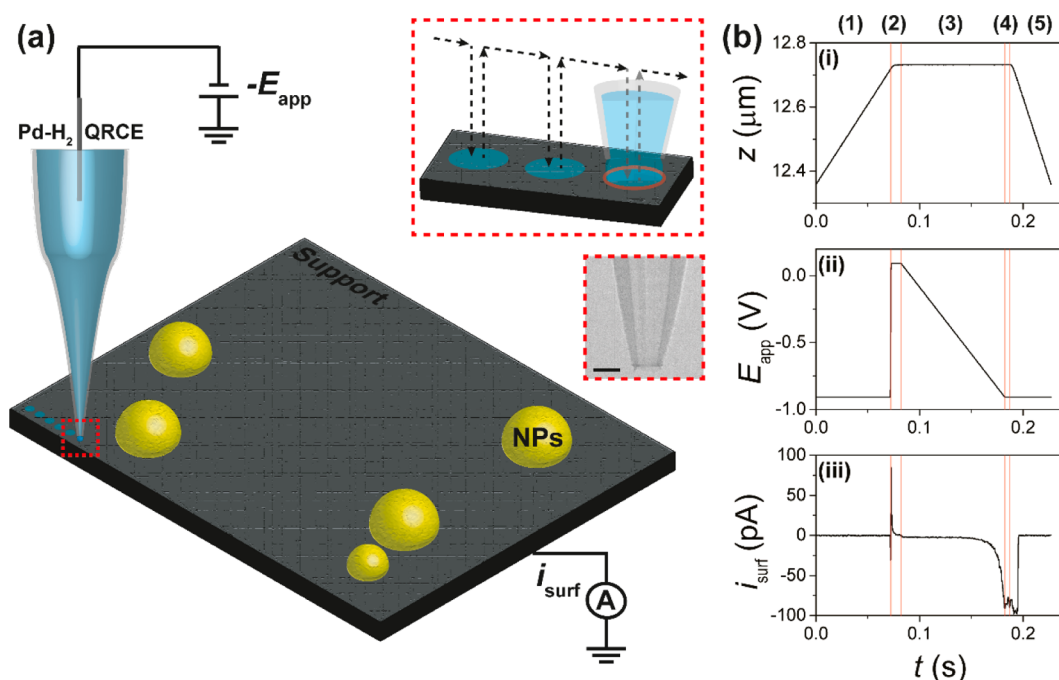


Figure 1. (a) Schematic of the general procedure for voltammetric hopping mode SECCM with a single-channel nanopipet probe. In this setup, a voltage of $-E_{\text{app}}$ with respect to ground is applied at the quasi-reference counter electrode (QRCE) in the nanopipet barrel to control the working electrode potential (E_{app}), and the working electrode current (i_{surf}) is measured. i_{surf} also serves as a feedback signal to detect meniscus contact with the surface during probe approach. The arrows show the movement of the nanopipet probe along the surface (shown inset). Also shown in the inset is a TEM image of the end of a representative nanopipet probe (the scale bar indicates 40 nm). (b) Example plots of (i) z -position, (ii) E_{app} , and (iii) i_{surf} as a function of time, recorded simultaneously during a single approach to a MoS_2 substrate with a nanopipet containing 100 mM HClO_4 at an acquisition rate of ca. 0.25 s per pixel.

In contrast, in scanning electrochemical cell microscopy (SECCM) and related droplet cell-based imaging techniques, the electrochemical properties of a substrate electrode surface are probed *directly and locally* with integrated probe positional feedback.^{27,28} Electrochemical measurements are confined to an area on a surface defined by the droplet (meniscus) from the end of a pulled glass or quartz capillary, with probe (tip) diameters typically in the hundreds of nm^{29,30} to μm ^{31,32} range. Structure–function problems of many different classes of materials have been resolved with SECCM-based methods.^{30,33–36} Recent studies have shown the strength of the voltammetric “hopping” mode,^{36–38} where electrochemical flux data over large potential ranges (>1 V) can be constructed through data acquisition of a full cyclic (or linear-sweep) voltammogram at each pixel, although lengthy scan times are needed to acquire such data.

The work reported herein addresses new domains in high-resolution electrochemistry, such as probing the full current–voltage relationship of elementary nanoscale sites on surfaces, and *within individual entities* (nanoparticles, NPs), achieved by great advances in the *spatial resolution* and *image acquisition rates* possible with electrochemical imaging. We report synchronous maps of topography (height resolution of better than 2 nm) and electrochemical flux movies with hundreds of frames (2500 pixels/frame), obtained in just minutes. The technique is first benchmarked by investigating the hydrogen evolution reaction (HER) on MoS_2 , a promising earth-abundant electrocatalyst, which has recently been investigated with SECCM.³⁶ Major new insights on the intrinsic activity of edge and basal planes are unveiled, afforded by the excellent spatial resolution achievable with the fine nanopipet probe ($d \approx 30$ nm). Furthermore, *subparticle activity variations* are

demonstrated for the first time with any SEPM method, with the kinetics of hydrazine oxidation shown to vary significantly across the surface of individual AuNPs. Subentity measurements in electrochemistry have only recently been realized and have been confined to optically active molecules.^{9–13} While these methods are powerful, the method described herein is generally applicable to any electrochemical process.

RESULTS AND DISCUSSION

Single-Channel SECCM: Operating Principles. Salient experimental details are given in the [Experimental Section](#), but for clarity of understanding, key features of the single-channel SECCM protocol utilized herein are outlined. The instrumentation and working principles of the SECCM setup are shown schematically in [Figure 1a](#). A single-channel nanopipet probe [transmission electron microscopy (TEM) image shown inset in [Figure 1a](#)] with surface current (i_{surf}) positional feedback (detailed below) was employed. This instrumental set up is greatly simplified compared to the conventional dual-channel SECCM set up,^{27,28,39} only requiring x – y – z piezoelectric positioners, a current follower (electrometer), a waveform generator (digital herein), and a data acquisition system (FPGA card herein). In this work, SECCM has been operated in the voltammetric “hopping” mode regime,^{36–38} where the nanopipet probe was approached to the surface of interest at a series of predefined locations in a grid, and, upon each meniscus landing, a voltammetric experiment (cyclic/linear-sweep or potential-step waveforms) was carried out, building up a dynamic electrochemical “map” of the substrate.

Examples of the z -position, applied potential (E_{app}), and i_{surf} synchronously recorded at high frequency, as a function of time, during a single “hop” of a voltammetric SECCM scanning

experiment are shown in Figure 1b. During the initial approach (1 in Figure 1b), E_{app} (termed the approach voltage, E_a) was chosen to be sufficient to drive the reaction interest (HER in the example in Figure 1b) at the substrate surface upon meniscus landing to generate a reliable current signal for positional control, without the probe making physical contact. When the meniscus made contact with the substrate surface, a two electrode electrochemical cell was formed and a reductive transient in i_{surf} resulted due to the reaction at the substrate (working electrode) within the confined area of the droplet cell. The z-approach halted immediately upon detecting a user-set threshold current ($i_{\text{surf}} \approx -0.95$ pA, herein), and E_{app} switched to the initial potential, causing an oxidative transient in i_{surf} attributable to double-layer charging current (2 in Figure 1b). After a predefined hold-time (10 ms in Figure 1b), an $E_{\text{app}}-t$ waveform was applied (linear sweep at a voltammetric scan rate, ν , of 10 V s^{-1} in Figure 1b) and i_{surf} was recorded simultaneously (3 in Figure 1b). After holding at the final potential (4 in Figure 1b) for a predefined hold time (5 ms in Figure 1b), the probe retracted and E_{app} switched back to the initial approach value for the next hop (5 in Figure 1b).

The procedure outlined above repeated at each pixel of the scan and i_{surf} at a given E_{app} was plotted as a function of $x-y$ coordinate to produce “electrochemical maps” of the substrate. The individual $i_{\text{surf}}-E_{\text{app}}$ “frames” were then combined to produce spatially resolved electrochemical movies, which visualize the activity of the surface over a large potential range. In addition, the final z-position of the piezoelectric positioner during approach (i.e., 3 in Figure 1b–i) was plotted as a function of $x-y$ coordinate to produce a high-resolution topographical image of the scan area. Herein, this methodology, combined with the use of a fine, single channelled nanopipet probe ($d \approx 30 \text{ nm}$), has enabled fast, high-resolution simultaneous topography/activity mapping of catalytic nanomaterials. The two electrocatalytic systems considered below, (i) MoS_2 , a promising earth-abundant electrocatalyst for the HER,⁴⁰ and (ii) metallic NPs adhered to a carbon support, which is widely utilized in a range of catalytic applications^{4,5} (e.g., $[\text{N}_2\text{H}_5]^+$ oxidation herein), serve to demonstrate the wide applicability of the technique.

HER at MoS_2 : Basal vs Edge Plane Activity. MoS_2 has attracted considerable interest in a range of (electro)chemical applications, for example, as an abundant and low-cost alternative electrocatalyst to platinum for the HER, eq 1.^{40,41}



In a recent study from our group,³⁶ correlation of spatially resolved SECCM measurements with structural information from scanning electron microscopy (SEM) and AFM demonstrated unequivocally that the HER is greatly facilitated at the edge plane (e.g., surface defects such as step edges) relative to the basal plane, which possessed activity comparable to polycrystalline Co, Ni, Cu, and Au. Using a conventional two-barreled probe ($d \approx 600 \text{ nm}$) to generate a 2025 pixel map (45×45 , $1 \mu\text{m}$ spatial resolution) at a rate of ca. 10 s per pixel, it was demonstrated how individual linear sweep voltammograms (LSVs) could be extracted and analyzed semiquantitatively to reveal a Tafel slope of $\sim 120 \text{ mV/decade}$ and exchange current densities (J_0) of 2.5×10^{-6} and $\sim 1 \times 10^{-4} \text{ A cm}^{-2}$ on the basal and edge planes (i.e., $J_{0,\text{EP}}/J_{0,\text{BP}} \approx 40$), respectively. In order to benchmark the single-channel SECCM approach highlighted in Figure 1a, this process was investigated, but with time-scale and spatial resolution improvements of ca. 40- and

400-fold, respectively, to reveal significant new insights into nanoscale structure–function in this class of material.

An important aspect of this technique is that the probes used are easily visualized by TEM after experiments. The probe used to obtain the MoS_2 activity/topography data in Figure 2 is

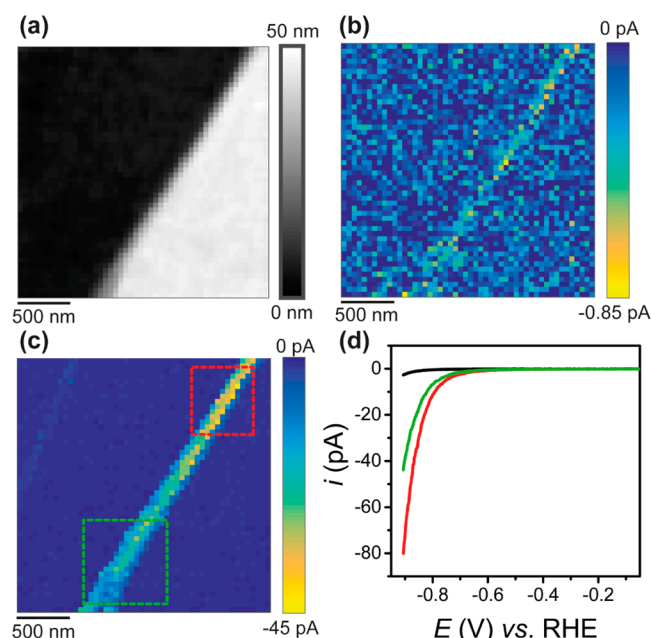


Figure 2. (a) Topographical and (b, c) spatially resolved electrochemical maps (2500 pixels over a $2.5 \times 2.5 \mu\text{m}$ scan area, 400 pixels μm^{-2}) obtained with the voltammetric hopping mode SECCM protocol (Figure 1), visualizing HER activity on a cleaved MoS_2 surface. The nanopipet probe ($d \approx 30 \text{ nm}$, TEM image shown in Figure S1a) contained 100 mM HClO_4 . The electrochemical maps are for (b) -0.507 and (c) -0.857 V vs RHE (see movie S1 for the full potential range with 451 frames). (d) Average LSVs obtained on the basal plane [black trace, dark blue areas in (c)] and surface defects (steps) of $\sim 21 \text{ nm}$ [green trace, indicated by the green box in (c)] and $\sim 41 \text{ nm}$ in height [red trace, indicated by the red box in (c)]. Experimental parameters were as follows: $\nu = 1 \text{ V s}^{-1}$, scan time (t_s) of 43.9 min (ca. 1.05 s per pixel) and $E_a = -0.907 \text{ V vs RHE}$. The data presented in (a–c) are not interpolated.

shown in Figure S1a. The topographical map in Figure 2a obtained directly by SECCM easily reveals a ca. 40 nm high step traversing the scan area from top to bottom. As the theoretical thickness of a monolayer of MoS_2 is ca. 0.68 nm ,⁴² this feature is made up of tens of MoS_2 layers. The topographical line-scan profiles taken across the step, shown in Figure S2, show that the morphology of the feature actually changes from a single multilayer step at the top (41 nm, red trace) to two smaller multilayer steps at the bottom (20 and 21 nm in height, blue trace). It needs to be emphasized that the high-resolution topographical image shown in Figure 2a has been produced directly using SECCM (z-positional data) and yet is comparable in quality to previously reported AFM topographical images obtained on similar sized (step edge) features.³⁶ This is obviously a major advantage of the approach outlined herein: high-resolution topographical and electrochemical (vide infra) images are obtained synchronously in a single scanning experiment. The z-height resolution achievable with the instrumental set up outlined in Figure 1 is considered below.

A spatially resolved LSV-SECCM movie of the scan area is shown in [movie S1](#). The movie consists of 451 image frames [i.e., 1 image every 2 mV, total scan time (t_s) = 43.9 min], and each pixel ($50 \times 50 = 2500$ in total) represents an individual (LSV examples shown in [Figure S3](#)) in the $2.5 \times 2.5 \mu\text{m}$ scan area (pixel density = 400 pixels μm^{-2}). The map was obtained at a rate of ca. 1.05 s per pixel, which is further improved upon below. Two individual frames from the movie, at potentials of -0.507 and -0.857 V vs the reversible hydrogen electrode (RHE), are shown in parts b and c, respectively, of [Figure 2](#). Through correlation of the electrochemical maps with the topographical data in [Figure 2a](#), it is clear that while the basal plane possesses uniform activity, the kinetics of the HER are enhanced at the site of the surface step defect (i.e., edge plane).

In contrast to our previous study,³⁶ where only a single pixel was collected along a line across a step edge, herein multiple pixels have been collected laterally across the region of surface defect, indicating that the activity of the edge plane (i.e., exposed at the surface defect) has been probed more directly. In order to illustrate this point, a schematic showing the meniscus cell landing on a “large” (i.e., ca. 40 nm) step-edge feature has been included in [Figure S4](#). It should be noted that the geometry (dimensions) of the large step-edge feature shown in the schematic was derived from a z -height line-scan profile obtained directly in the SECCM scan, as shown in [Figure S2b](#). Clearly, the proportion of exposed edge-plane within the meniscus cell probed area (droplet footprint) will scale with the size (height) of the surface defect and will be reflected in the current–voltage relationship at each pixel, as discussed below.

In [Figure 2c](#), there is a clear gradient in the activity enhancement along the defect from top-to-bottom, due to the change in morphology from a single multilayer step (ca. 41 nm high, see [Figure S5](#)) to two smaller multilayer steps (ca. 20 and 21 nm high). This is also evident in a histogram of i_{surf} (at $E_{\text{app}} = -0.907$ V vs RHE) as shown in [Figure S6](#), where there are three distinct regions in the distribution, corresponding to the basal plane and surface defect sites of ca. 21 and 41 nm in height. It is particularly clear from [Figure S6](#) that the basal plane possesses a very uniform activity, with an average i_{surf} value of -2.8 ± 0.7 pA (one standard deviation, $N = 2244$) at $E_{\text{app}} = -0.907$ V vs RHE. If point defects (e.g., sulfur vacancies), are responsible for the HER catalytic activity of the basal plane (2H phase), as has been proposed,⁴³ then these data indicate that the distribution would have to be highly uniform on the length scale (few μm^2) considered herein.

Average LSVs obtained on the basal plane (black trace) and along the major surface defect (green and red traces) spanning the scan area are shown in [Figure 2d](#). Evidently, the raw LSV data are of excellent quality (example individual LSVs are also shown in [Figure S3](#)), clearly reflecting the activity enhancement seen in the electrochemical maps ([Figure 2b,c](#)). It is worth noting that the enhancement in catalytic current scales almost quantitatively with the size of the surface defect site, with i_{surf} values of ca. -18 and -34 pA measured on the ~ 21 and ~ 41 nm step features, respectively (i.e., green and red box, respectively, in [Figure 2c](#)) at $E_{\text{app}} = -0.857$ V vs RHE. Furthermore, the current densities (J) are very high, ca. -85 and -2700 mA cm^{-2} on the basal and edge planes at $E_{\text{app}} = -0.857$ V vs RHE, respectively (values that would be impossible to achieve on this material with any other technique). The magnitude of the J and the ratio of J_{EP} and J_{BP} are consistent with what was reported in our previous

study.³⁶ These observations indicate that this ultrasmall scale meniscus (droplet) cell is relatively stable, with minimal distortion or spreading, even on the topographically challenging step edge features.

HER at MoS₂: Pushing the Limits of Spatial Resolution and Acquisition Rate. In [Figure 2](#), the approach ($0.4 \mu\text{m}$ at $5 \mu\text{m s}^{-1}$), retract ($0.4 \mu\text{m}$ at $10 \mu\text{m s}^{-1}$), and lateral movement ($0.05 \mu\text{m}$ at $3 \mu\text{m s}^{-1}$) take ca. 80, 40, and 17 ms, respectively, on each hop, which is insignificant compared to the time taken to obtain the LSVs, 900 ms (0.9 V at 1 V s^{-1}). Thus, in order to improve the overall scanning time, a ν of 10 V s^{-1} was applied; the results are shown in [Figure 3](#). The topographical map in

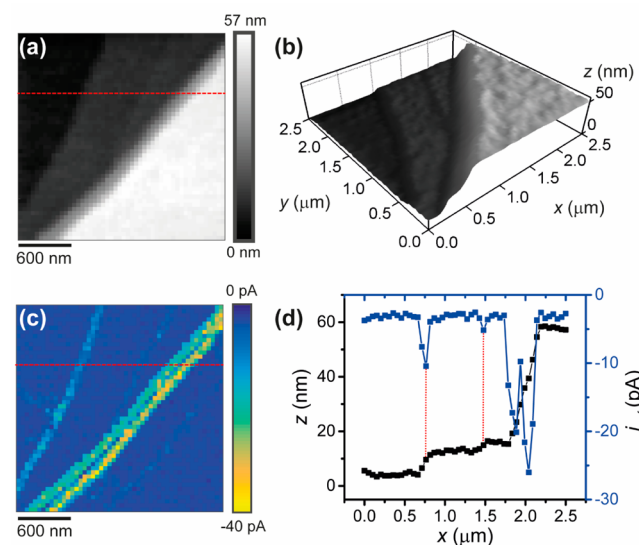


Figure 3. (a, b) Topographical and (c) spatially resolved electrochemical maps (2500 pixels over a $2.5 \times 2.5 \mu\text{m}$ scan area, 400 pixels μm^{-2}) obtained with the voltammetric hopping mode SECCM protocol ([Figure 1](#)), visualizing HER activity on a cleaved MoS₂ surface. The 3D topographical map in (b) is presented in an aspect ratio of 1:1:10 ($x/y/z$). The nanopipet probe ($d \approx 30$ nm, TEM image shown in [Figure S1a](#)) contained 100 mM HClO₄. The electrochemical map is for -0.857 V vs RHE (see [movie S2](#) for the full potential range with 384 frames). (d) z -Position (black trace) and i_{surf} (blue trace) line scan profiles of the area indicated by the red dashed line in (a) and (c). Experimental parameters were as follows: $\nu = 10$ V s^{-1} , $t_s = 10.6$ min (ca. 0.25 s per pixel), and $E_a = -0.907$ V vs RHE. The data presented in (a) and (c) are not interpolated.

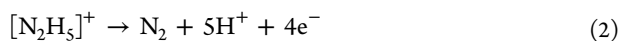
[Figure 3a](#) reveals a series of features (surface defects) with sizes of ca. 8, 2, and 43 nm (line-scan profiles shown in [Figure S7](#)), from left to right, respectively. The smallest feature (defect), of just 2 nm, which is more obvious in the 3D plot shown in [Figure 3b](#), is a step edge that is likely made up of a few (2 or 3) MoS₂ layers. It can be easily seen, with excellent signal-to-noise. This again reinforces the strength of this technique: it provides true nanoscale resolution for synchronous topographical/electrochemical imaging.

A spatially resolved LSV-SECCM movie of the scan area is shown in [movie S2](#). The movie is made up of 384 image frames (i.e., 1 image every 2.6 mV), with each frame comprised of 2500 pixels, at a density of 400 pixels μm^{-2} . The map took ca. 10.6 min to complete, corresponding to pixel (resolved in space) and frame (resolved in E_{app}) acquisition rates of ca. 0.25 s per pixel and 1.65 s per frame, respectively. It should also be noted that if only a single applied potential is of interest, a

potential-step (chronoamperometric) waveform can be applied, as demonstrated in Figure S8.

An individual frame from movie S2, obtained at an E_{app} of -0.857 V vs RHE, is shown in Figure 3c. The quality of the image is comparable to that obtained at the slower ν (1 V s^{-1} , see Figure 2c), again showing enhanced HER kinetics at the surface defect sites (step edges). It is worth noting that the fact that an area of basal plane is observable between the two closely spaced but large multilayer steps (i.e., see the blue trace in Figure S7) in the activity map shown in Figure 3c again indicates that the meniscus (droplet) cell is stable in these experiments, with minimal distortion or spreading over the relatively large surface features. Finally, the line-scan profiles of topography and i_{surf} in Figure 3d also demonstrate the strong coincidence between the surface features and HER activity, with the activity scaling with step height, as noted above.³⁶

$[\text{N}_2\text{H}_5]^+$ Oxidation at AuNPs: Probing Heterogeneous Activity within Individual NPs. We now turn to catalytic AuNPs electrodeposited on a catalytically inert glassy carbon (GC) support (see the Experimental Section) and consider the electro-oxidation of hydrazine in acidic media, eq 2.⁴⁴



As shown in the SEM image in Figure 4a, they are irregularly shaped secondary particles (ca. 300 to 400 nm diameter) resulting from the aggregation of smaller (primary) Au clusters.

In order to find an area of the support surface for electrochemical imaging, an $8 \times 8 \mu\text{m}$ topographical map ($0.1 \mu\text{m}$ hopping distance, shown in Figure S9) was

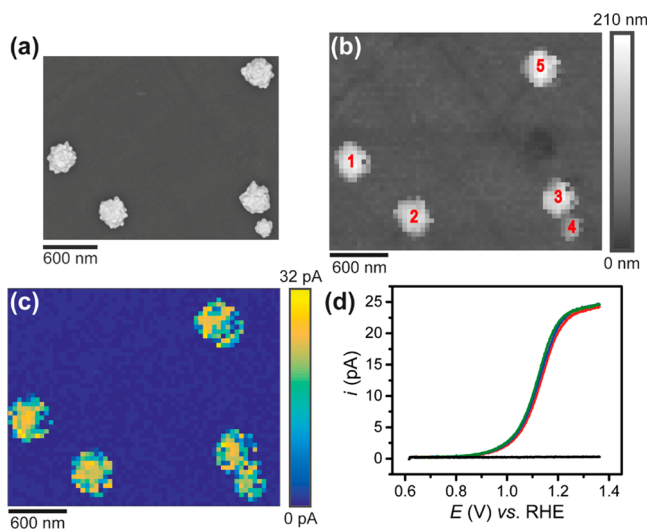


Figure 4. (a) SEM image of AuNPs, electrodeposited on a GC support. (b) Topographical and (c) spatially resolved electrochemical maps (2880 pixels over a $3 \times 2.4 \mu\text{m}$ scan area, $400 \text{ pixels } \mu\text{m}^{-2}$) obtained with the voltammetric hopping mode SECCM protocol (Figure 1), visualizing the electrocatalytic oxidation of $[\text{N}_2\text{H}_5]^+$ on the surface of AuNPs. The nanopipet probe ($d \approx 30 \text{ nm}$, TEM image shown in Figure S1b) contained $12.3 \text{ mM } (\text{N}_2\text{H}_5)\text{HSO}_4$ and 100 mM HClO_4 . The electrochemical map in (c) is for 1.35 V vs RHE (see movie S3 for the full potential range with 151 frames). (d) Average LSVs obtained from particle 1 (orange trace); particle 2 (red trace); particles 3 and 4 (blue trace); particle 5 (green trace); and GC (black trace). The individual AuNPs to which these LSVs relate are labeled in (b). Experimental parameters were as follows: $\nu = 1 \text{ V s}^{-1}$, $t_s = 49.9 \text{ min}$ (ca. 1.04 s per pixel), and $E_a = -0.835 \text{ V}$ vs RHE. The data presented in (b) and (c) are not interpolated.

constructed using a standard hopping mode protocol, in which the probe (Figure S1b) was retracted immediately upon detecting the surface. The map is remarkable in being able to pinpoint primary AuNPs (indicated by arrows in Figure S9a) that barely show up in the SEM image (Figure S9b). After selecting a suitable area to study (marked as a red box in Figure S9), a voltammetric hopping mode SECCM was carried out (scan rate of 1 V s^{-1}) to construct spatially resolved synchronous topographical and electrochemical maps, as shown in parts b and c, respectively, of Figure 4.

The topographical map in Figure 4b (and shown in 3D in Figure S10) reveals five AuNPs in the scan area (labeled 1–5 in the plot), in accordance with the SEM image shown in Figure 4a. The shape of the particles in the SECCM topographical image (Figure 4b) mirror the overall morphology revealed by SEM (Figure 4a). Also evident in Figure 4b are small scratches and wells in the GC support surface (arising from electrode polishing), which correspond well with the features visible from SEM imaging (Figure 4a). Again, this is a testament to the high-quality of the topographical images achievable with the voltammetric hopping mode SECCM set up shown in Figure 1, as these features are typically only a few nm deep. Similarly, high-quality topographical images of PtNPs on a GC support were also produced using this method, as shown in Figure S11.

A spatially resolved LSV-SECCM movie from the scan area is shown in movie S3. The movie is made up of 151 image frames (i.e., 1 image every 5 mV), with each frame composed of 2880 pixels, at a density of $400 \text{ pixels } \mu\text{m}^{-2}$, obtained at a rate of ca. 1.04 s per pixel. Through comparison of movie S3 with the topography map in Figure 4b, it is clear that the electro-oxidation of $[\text{N}_2\text{H}_5]^+$ [see eq 2] “switches on” at the surface of the AuNPs at ca. 0.9 V vs RHE, whereas the carbon support remains homogeneously inactive throughout the entire potential range (0.615 – 1.365 V vs RHE), as expected, given the relative inactivity of carbon electrodes for this reaction.^{38,45} An individual frame of the movie, for a potential of 1.35 V vs RHE (i.e., under mass-transport control, see below) is shown in Figure 4c and highlights this contrast.

One can perform many analyses with these data. For example, particle-average LSVs for each of the five individual AuNPs can be produced and compared, as in Figure 4d. The average LSVs were extracted exclusively from pixels located on top of the particles (for reasons explored below) and exhibit the classical sigmoidal shape characteristic of (near) steady-state voltammetry, with a steady-state transport-limited current (i_{lim}) of ca. 23 pA . This mass transport current is mainly due to diffusion but is modified by the electric field at the end of the nanopipet.⁴⁶ On average, the AuNPs in the scan area possess slightly different activities for $[\text{N}_2\text{H}_5]^+$ oxidation (the voltammetric half-wave potential, $E_{1/2}$ varies by ca. 20 mV), increasing in the order $(5) < (1) \approx (3) \approx (4) < (2)$ (individual particles labeled in Figure 4b). It is worth noting that the order of increasing activity does not correlate to the order in which the particles were scanned (i.e., the scan started and finished in the bottom-left and top-right corners, respectively, in Figure 4c). Considering this, and the fact that $E_{1/2}$ is comparable to what has been reported under similar mass transport conditions,⁴⁵ it is clear that producing and maintaining a “clean” catalytic surface is not an issue. It should also be noted that during meniscus landing the substrate surface is transiently biased at a strongly reducing potential ($E_a = -0.835 \text{ V}$ vs RHE in Figure 4), which has an in situ “surface cleaning” effect in electrocatalytic studies.^{32,36}

Inspecting the image in Figure 4c, lower i_{lim} values are observed around the edges of the AuNPs compared to the top surface, which could be due to some distortion of the meniscus or minor droplet spreading onto the inactive GC support in these areas. This is consistent with the fact that the electrochemical footprint (see Figure 4c) is slightly larger than the topographical footprint (see Figure 4b). A similar observation was also made when investigating the HER on PtNPs, as shown in Figure S11. The slight instability of the droplet cell at and around the edges of the AuNPs was further confirmed by taking perpendicular line-scans of topography and i_{surf} across a particle and comparing them for $E_{\text{app}} = 1.35$ V vs RHE, as shown in Figure 5. Evidently, in both the x and y

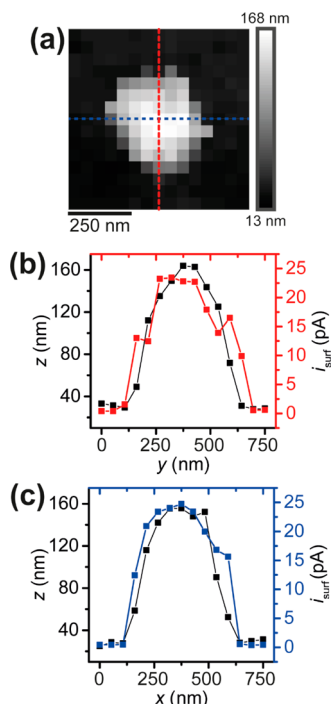


Figure 5. (a) Topographical map of AuNP 2 (data from Figure 4b, above) obtained with the voltammetric hopping mode SECCM protocol. Experimental details are available in the caption of Figure 4. (b) y - and (c) x -direction line scan profiles of z -position (black traces) and i_{surf} (red and blue traces), obtained at an applied potential of 1.35 V vs RHE (i.e., under mass-transport control).

direction, relatively constant i_{lim} values are observed at pixels situated on top the AuNP (ca. 23 pA) compared to lower values at and around the edges. This is unsurprising, given the severe curvature on the edges of the AuNPs (on the scale of the droplet cell). In spite of this topographical variation, as demonstrated above, electrochemical data collected on top of the particles is amenable to further analysis.

From movie S3, it clear that there are large variations in activity within each AuNP (i.e., at the *intraparticle level*), with local areas of high activity within each particle. This can be attributed to the fact that the $[\text{N}_2\text{H}_5]^+$ electro-oxidation reaction is crystallographic orientation dependent^{5,37,44} and the AuNPs comprise nonfaceted aggregates of Au clusters (see Figure 4a). The subparticle reaction mapping that is possible with this technique was further explored for a single AuNP studied in isolation at $E_{\text{app}} = 1.15$ V vs RHE (i.e., near $E_{1/2}$), as shown Figure 6. Comparison of the topographical map in Figure 6a and the electrochemical maps in Figure 6b and movie

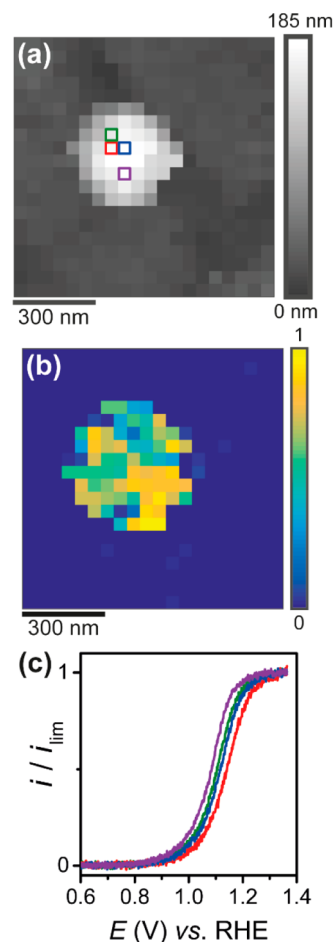


Figure 6. (a) Topographical and (b) spatially resolved electrochemical maps (400 pixels over a $1 \times 1 \mu\text{m}$ scan area) obtained with the voltammetric hopping mode SECCM protocol (Figure 1), visualizing the electrocatalytic oxidation of $[\text{N}_2\text{H}_5]^+$ on the surface of an AuNP. The nanopipet probe ($d \approx 30$ nm, TEM image shown in Figure S1b) contained 12.3 mM $(\text{N}_2\text{H}_5)\text{HSO}_4$ and 100 mM HClO_4 . The electrochemical map in (b), normalized with respect to i_{lim} (i.e., $i_{\text{surf}}/i_{\text{lim}}$), is for 1.15 V vs RHE (see movie S4 for 221 image frames over the full potential range). Pixels collected on the GC surface were normalized with the AuNP surface average i_{lim} (ca. 25 pA). (c) Normalized LSVs collected at the individual pixels labeled in (a). Experimental parameters were as follows: $\nu = 1 \text{ V s}^{-1}$, $t_s = 9.7$ min (ca. 1.45 s per pixel) and $E_a = -0.835$ V vs RHE. The data presented in (a) and (b) are not interpolated.

S4 reveals the strong spatial-dependent electrocatalytic activity. It should be noted that in order to discount any influence of slight variations in the droplet-cell morphology on the electrochemical data (i.e., i_{lim} varied by ca. $\pm 10\%$ for the pixels considered below), normalized surface current ($i_{\text{surf}}/i_{\text{lim}}$) is considered in Figure 6 and movie S4. This small variation has no influence on the deductions vis-à-vis subparticle activity.

The LSVs extracted from four areas on top of the AuNP (pixels indicated in Figure 6a) are shown in Figure 6c. Evidently, there is a significant variation in electrocatalytic activity across the AuNP top surface, with $E_{1/2}$ ranging from 1.08 to 1.14 V vs RHE in the presented LSV plots. Notably, while at the single-entity level, on average, all of the five particles investigated in Figure 4 possessed comparable catalytic activity (see Figure 4d) at the subnanoparticle (i.e., sub-NP) level, significant intra-NP activities are revealed. A replicate

measurement on the same isolated AuNP, as shown in Figure S12, confirmed that the areas of high/low catalytic activity (i.e., “hot” and “cold” spots) are fixed in position, highlighting the general reproducibility of this method.

The only previous reports of subnanoentity (i.e., sub-NP) activity mapping have relied on super-high-resolution optical imaging techniques utilizing surface-enhanced Raman scattering or surface-enhanced fluorescence to infer on (electro)chemical reactivity at the subentity level, within nanomaterials of similar size (hundreds of nm) to those studied herein.^{9–13} While powerful, they are restricted to certain probe molecules and, separately, require supplementary techniques to characterize morphology (e.g., electron microscopy). The approach presented herein (Figure 1) is more generally applicable to any electrochemical system. It should be noted that there might be further scope to improve the spatial resolution achievable with SECCM, with single-barreled quartz laser pulled nanopipets of sub-10 nm diameter being reported elsewhere, although such probes have never been used for imaging of any kind.⁴⁷

CONCLUSIONS

In conclusion, single-channel SECCM, deployed in a voltammetric hopping mode regime, opens up new prospects for direct topographical/electrochemical imaging of nanomaterials at the subentity level. Topographical (*z*-height) and electrochemical (*i*–*E*) data are collected synchronously to construct images (maps) which easily resolve step-height features as small as ca. 2 nm (e.g., two- to three-layer step edge on MoS₂) on planar surfaces, at rates as fast as 0.25 s per pixel or 1.65 s per image frame, to create potential-resolved electrochemical activity movies with hundreds of images in a matter of minutes. The basal plane of MoS₂ (2H phase) was shown to possess highly uniform HER-activity over μm length-scale regions, while surface defects (i.e., few to multilayer step edges) gave rise to morphology-dependent (i.e., height-dependent) enhancements in catalytic activity. Individual AuNPs, electrodeposited on a GC support, were, on average, shown to possess comparable activities toward the oxidation of $[\text{N}_2\text{H}_5]^+$ (i.e., at the single-nanoentity level). By contrast, at the subnanoentity (e.g., sub-NP) level, individual LSVs collected *within a single AuNP* exhibited strongly spatially dependent activity toward $[\text{N}_2\text{H}_5]^+$ oxidation. These exemplar systems pave the way for a future in electrochemistry in which the activity of nanostructured electroactive materials can be viewed directly and related to underlying structure through electrochemical movies.

Although the method has been applied exclusively to subentity reactivity mapping with electrocatalytic nanomaterials, such an approach would also be applicable to other fields of materials science. Moreover, beyond imaging, the versatility of mobile meniscus cells is fast advancing, for example, as tools for surface nanofabrication^{48,49} and the creation of nanopores in surfaces,⁵⁰ and the advances herein on the use of the smallest meniscus probes should impact significantly on these fields.

EXPERIMENTAL SECTION

Chemical Reagents and Electrode Materials. Perchloric acid (HClO₄, Sigma-Aldrich, 70%), hydrazine sulfate ($[\text{N}_2\text{H}_5][\text{HSO}_4]$, Sigma-Aldrich, $\geq 99\%$), potassium tetrachloroaurate (KAuCl₄, Sigma-Aldrich, 99.995%), and potassium hexachloroplatinate (K₂PtCl₆, Sigma-Aldrich, $\geq 99.99\%$) were used as supplied by the manufacturer.

All solutions were prepared with deionized water (Integra HP, Purite, U.K.), which had a resistivity of 18.2 M Ω -cm (25 °C).

The naturally occurring molybdenite (MoS₂) crystal (previously shown to be the semiconducting 2H phase³⁶) was purchased from Manchester Nanomaterials Ltd. (U.K.). Prior to use as an electrode material, flakes of MoS₂ were fixed in place using copper SEM tape on a glass microscope slide and mechanically cleaved using the “scotch-tape method”.⁵¹ In order to avoid possible issues arising from ohmic resistance (through bottom-contact), the freshly cleaved MoS₂ flakes were electrically connected through top-contact with conductive copper SEM tape. The glassy carbon (GC) substrate was purchased from HTW-Germany and polished with an aqueous slurry of 0.05 μm Al₂O₃ (Buehler, U.S.A.) prior to use. The AuNPs were electrodeposited onto the GC substrate from a 0.5 mM KAuCl₄ in 0.1 M HClO₄ plating solution by applying a potential of 0 V vs Ag/AgCl (3 M KCl) for 3 s, followed by 0.5 V vs Ag/AgCl for 30 s. The PtNPs were electrodeposited onto the GC substrate from a 1 mM K₂PtCl₆ in 0.1 M HClO₄ plating solution by applying a potential of –0.4 V vs Ag/AgCl (3 M KCl) for 150 s. The palladium–hydrogen (Pd–H₂) quasi-reference counter electrode (QRCE) was prepared by cathodic polarization of a Pd wire (0.125 mm diameter, Goodfellow, 99.95%) in a 0.1 M HClO₄ solution. Field-emission SEM images of the NP ensembles were obtained with a GeminiSEM 500 scanning electron microscope (Zeiss, Germany), at an acceleration voltage of 3 kV, with an InLens detector. The QRCE potential was calibrated against a commercial saturated calomel electrode (SCE) after every experiment, which has a potential of +0.241 V vs the standard hydrogen electrode (SHE).⁵²

Electrochemical Measurements. The electrodeposition experiments were performed in a three-electrode format with an Ag/AgCl (3 M KCl) reference electrode and platinum wire (Goodfellow, U.K.) auxiliary electrode on a CHI-730A potentiostat (CH Instruments, U.S.A.). All other electrochemical experiments were carried out in the SECCM format on a home-built electrochemical workstation.^{28,39} In this setup (shown schematically in Figure 1), a single-barreled nanopipet probe was filled with electrolyte solution and mounted on a *z*-piezoelectric positioner (P-753.3CD, Physik Instrumente). The tip of the nanopipet probes were circular in shape, with an internal diameter of ca. 30 nm (shown in Figure S1). A Pd–H₂ wire placed in the barrel of the nanopipet, through the back, served as a QRCE. The nanopipet was positioned above the surface of interest using micropositioners for coarse movement and an *xy*-piezoelectric positioner (P-622.2CD, Physik Instrumente) for fine movement. During approach, i_{surf} was used as feedback to detect when the meniscus at the end of the nanopipet had made contact with the working electrode surface. The threshold current herein was ca. 0.95 pA. The nanopipet itself did not contact the substrate. Electrochemical (voltammetric) measurements were performed in the confined area defined by the meniscus (droplet cell) created between the tip and substrate.

Electrochemical measurements at the substrate (working electrode) were made using a linear-sweep voltammetric “hopping” regime.^{30,37,38} In brief, as shown schematically in Figure 1, the nanopipet was approached to the surface of interest at a series of predefined locations in a grid and, upon each landing, a LSV measurement was carried out, building up a voltammetric “map” of the substrate. The final position of the *z*-piezoelectric positioner at approach was also used to build up a topographical image of the substrate synchronously (detailed below). The hopping distance (i.e., *xy* spatial resolution) between each pixel was 50 nm.

The SECCM cell and all piezoelectric positioners were placed in an aluminum Faraday cage equipped with heat sinks and vacuum panels to minimize noise and thermal drift. The Faraday cage was installed on an optical table (RS2000, Newport, U.S.A.) with automatic leveling isolators (Newport, S-2000A-423.5). The QRCE potential was controlled (with respect to ground) and the substrate (working electrode, common ground) current was measured using a home-built electrometer. The current was measured every 4 μs , which was averaged 65 or 257 times, to give data acquisition rates of 260 and 1028 μs at voltammetric scan rates of 10 and 1 V s^{–1}, respectively (i.e.,

1 data point every 2.6 or 1.028 mV, at 10 and 1 V s⁻¹, respectively). During the chronoamperometric and conventional scan-hopping experiments, the current was measured every 4 μ s and averaged 257 times to give a data acquisition rate of 1028 μ s. A home-built eighth order (low-pass) brick-wall filter unit was utilized during data (current) collection, with a time constant of 200 and 1000 μ s at 10 and 1 V s⁻¹, respectively. Data acquisition and fine control of all the instruments was achieved using an FPGA card (PCIe-7852R) controlled by a LabVIEW 2016 (National Instruments, U.S.A.) interface.

The single-barreled nanopipets were pulled from quartz filamented capillaries (QTF120–90–100, Friedrich & Dimmock, Inc., U.S.A.) using a CO₂ laser puller (P-2000, Sutter Instruments, U.S.A.; pulling parameters: line 1: HEAT 750, FIL 4, VEL 30, DEL 150, PUL 80; line 2: HEAT 650, FIL 3, VEL 40, DEL 135, PUL 150). The morphology of the nanopipet tips was imaged, postexperiment, using transmission electron microscopy (TEM) on a JEOL 2000X transmission electron microscope (JEOL, Japan) operating at an acceleration voltage of 200 kV. After the nanopipet tips were filled with the solution of interest using a MicroFil syringe (World Precision Instruments, Inc., U.S.A.), a layer of silicone oil (DC 200, Fluka) was added on top in order to minimize evaporation. The QRCE was then inserted through the oil layer, into the solution of interest, and mounted on the z-piezoelectric positioner, as described above.

After collection, the raw data were processed using the Matlab R2015b (8.6.0.267246, Mathworks, U.S.A.) software package. Sample tilt was corrected using the scanning probe image processing software package (SPIP v. 6.0.14, Image Metrology, Denmark). Data plotting was performed using the Matlab R2015b and OriginPro 2016 64bit (b9.3.226, OriginLab, U.S.A.) software packages. All 2D topographical and electrochemical maps were plotted in Matlab, with no data interpolation. All movies have no data interpolation. The 3D topographical surface maps were constructed in SPIP with interpolation of the data.

■ ASSOCIATED CONTENT

Supporting Information

The Supporting Information is available free of charge on the ACS Publications website at DOI: 10.1021/jacs.7b09355.

Figures S1–S8 as described in the text (PDF)

Spatially resolved LSV-SECCM movie obtained from the HER on the surface of bulk MoS₂ ($\nu = 1$ V s⁻¹) (AVI)

Spatially resolved LSV-SECCM movie obtained from the HER on the surface of bulk MoS₂ ($\nu = 1$ V s⁻¹) (AVI)

Spatially resolved LSV-SECCM movie obtained from [N₂H₅]⁺ oxidation on the surface of five individual AuNPs supported on GC (AVI)

Spatially resolved LSV-SECCM movie obtained from [N₂H₅]⁺ oxidation on the surface of an isolated AuNPs supported on GC (AVI)

■ AUTHOR INFORMATION

Corresponding Authors

*c.bentley.1@warwick.ac.uk

*p.r.unwin@warwick.ac.uk

ORCID

Cameron L. Bentley: 0000-0001-7867-6068

Minkyung Kang: 0000-0003-3248-8496

Patrick R. Unwin: 0000-0003-3106-2178

Notes

The authors declare no competing financial interest.

■ ACKNOWLEDGMENTS

This work was supported by a Marie Curie Individual Fellowship 702048 NEIL (C.L.B.). P.R.U. gratefully acknowl-

edges support from a Royal Society Wolfson Research Merit Award. M.K. acknowledges support from the University of Warwick Chancellor's International Scholarship.

■ REFERENCES

- (1) Sambur, J. B.; Chen, P., Approaches to Single-Nanoparticle Catalysis. In *Annual Review of Physical Chemistry*; Johnson, M. A., Martinez, T. J., Eds.; Annual Reviews: Palo Alto, 2014; Vol. 65, pp 395–422.
- (2) Oja, S. M.; Fan, Y.; Armstrong, C. M.; Defnet, P.; Zhang, B. *Anal. Chem.* **2016**, 88 (1), 414–430.
- (3) Wu, J. B.; Yang, H. *Acc. Chem. Res.* **2013**, 46 (8), 1848–1857.
- (4) Kleijn, S. E. F.; Lai, S. C. S.; Koper, M. T. M.; Unwin, P. R. *Angew. Chem., Int. Ed.* **2014**, 53 (14), 3558–3586.
- (5) Rodriguez, P.; Koper, M. T. M. *Phys. Chem. Chem. Phys.* **2014**, 16 (27), 13583–13594.
- (6) Trogadas, P.; Ramani, V.; Strasser, P.; Fuller, T. F.; Coppens, M. O. *Angew. Chem., Int. Ed.* **2016**, 55 (1), 122–148.
- (7) Chen, A.; Chatterjee, S. *Chem. Soc. Rev.* **2013**, 42 (12), 5425–5438.
- (8) Perreault, F.; Fonseca de Faria, A.; Elimelech, M. *Chem. Soc. Rev.* **2015**, 44 (16), 5861–5896.
- (9) Tachikawa, T.; Yamashita, S.; Majima, T. *J. Am. Chem. Soc.* **2011**, 133 (18), 7197–7204.
- (10) Zhou, X. C.; Andoy, N. M.; Liu, G. K.; Choudhary, E.; Han, K. S.; Shen, H.; Chen, P. *Nat. Nanotechnol.* **2012**, 7 (4), 237–241.
- (11) Andoy, N. M.; Zhou, X.; Choudhary, E.; Shen, H.; Liu, G.; Chen, P. *J. Am. Chem. Soc.* **2013**, 135 (5), 1845–1852.
- (12) Wilson, A. J.; Willets, K. A. *Nano Lett.* **2014**, 14 (2), 939–945.
- (13) Sambur, J. B.; Chen, T. Y.; Choudhary, E.; Chen, G. Q.; Nissen, E. J.; Thomas, E. M.; Zou, N. M.; Chen, P. *Nature* **2016**, 530 (7588), 77–80.
- (14) Kang, M.; Momotenko, D.; Page, A.; Perry, D.; Unwin, P. R. *Langmuir* **2016**, 32 (32), 7993–8008.
- (15) Kranz, C. *Analyst* **2014**, 139 (2), 336–352.
- (16) Yu, Y.; Sun, T.; Mirkin, M. V. *Anal. Chem.* **2015**, 87 (14), 7446–7453.
- (17) Blanchard, P. Y.; Sun, T.; Yu, Y.; Wei, Z. Y.; Matsui, H.; Mirkin, M. V. *Langmuir* **2016**, 32 (10), 2500–2508.
- (18) Kim, J.; Renault, C.; Nioradze, N.; Arroyo-Curras, N.; Leonard, K. C.; Bard, A. J. *J. Am. Chem. Soc.* **2016**, 138 (27), 8560–8568.
- (19) Ma, W.; Hu, K. K.; Chen, Q. J.; Zhou, M.; Mirkin, M. V.; Bard, A. J. *Nano Lett.* **2017**, 17 (7), 4354–4358.
- (20) Takahashi, Y.; Shevchuk, A. I.; Novak, P.; Babakinejad, B.; Macpherson, J.; Unwin, P. R.; Shiku, H.; Gorelik, J.; Klenerman, D.; Korchev, Y. E.; Matsue, T. *Proc. Natl. Acad. Sci. U. S. A.* **2012**, 109 (29), 11540–11545.
- (21) Macpherson, J. V.; Unwin, P. R. *Anal. Chem.* **2000**, 72 (2), 276–285.
- (22) Kranz, C.; Friedbacher, G.; Mizaikoff, B.; Lugstein, A.; Smoliner, J.; Bertagnolli, E. *Anal. Chem.* **2001**, 73 (11), 2491–2500.
- (23) Takahashi, Y.; Shevchuk, A. I.; Novak, P.; Murakami, Y.; Shiku, H.; Korchev, Y. E.; Matsue, T. *J. Am. Chem. Soc.* **2010**, 132 (29), 10118–10126.
- (24) Takahashi, Y.; Shevchuk, A. I.; Novak, P.; Zhang, Y. J.; Ebejer, N.; Macpherson, J. V.; Unwin, P. R.; Pollard, A. J.; Roy, D.; Clifford, C. A.; Shiku, H.; Matsue, T.; Klenerman, D.; Korchev, Y. E. *Angew. Chem., Int. Ed.* **2011**, 50 (41), 9638–9642.
- (25) O'Connell, M. A.; Lewis, J. R.; Wain, A. J. *Chem. Commun.* **2015**, 51 (51), 10314–10317.
- (26) Page, A.; Kang, M.; Armitstead, A.; Perry, D.; Unwin, P. R. *Anal. Chem.* **2017**, 89 (5), 3021–3028.
- (27) Bentley, C. L.; Kang, M.; Unwin, P. R. *Curr. Opin. Electrochem.* **2017**, DOI: 10.1016/j.coelec.2017.06.011.
- (28) Ebejer, N.; Güell, A. G.; Lai, S. C. S.; McKelvey, K.; Snowden, M. E.; Unwin, P. R., Scanning Electrochemical Cell Microscopy: A Versatile Technique for Nanoscale Electrochemistry and Functional Imaging. In *Annual Review of Analytical Chemistry*; Cooks, R. G.,

Pemberton, J. E., Eds.; Annual Reviews: Palo Alto, 2013; Vol. 6, pp 329–351.

(29) Takahashi, Y.; Kumatani, A.; Munakata, H.; Inomata, H.; Ito, K.; Ino, K.; Shiku, H.; Unwin, P. R.; Korchev, Y. E.; Kanamura, K.; Matsue, T. *Nat. Commun.* **2014**, *5*, 5450.

(30) Güell, A. G.; Cuharuc, A. S.; Kim, Y.-R.; Zhang, G.; Tan, S.-y.; Ebejer, N.; Unwin, P. R. *ACS Nano* **2015**, *9* (4), 3558–3571.

(31) Aaronson, B. D. B.; Chen, C. H.; Li, H. J.; Koper, M. T. M.; Lai, S. C. S.; Unwin, P. R. *J. Am. Chem. Soc.* **2013**, *135* (10), 3873–3880.

(32) Chen, C.-H.; Meadows, K. E.; Cuharuc, A.; Lai, S. C. S.; Unwin, P. R. *Phys. Chem. Chem. Phys.* **2014**, *16* (34), 18545–18552.

(33) Unwin, P. R.; Güell, A. G.; Zhang, G. *Acc. Chem. Res.* **2016**, *49* (9), 2041–2048.

(34) Lai, S. C. S.; Dudin, P. V.; Macpherson, J. V.; Unwin, P. R. *J. Am. Chem. Soc.* **2011**, *133* (28), 10744–10747.

(35) Momotenko, D.; Byers, J. C.; McKelvey, K.; Kang, M.; Unwin, P. R. *ACS Nano* **2015**, *9* (9), 8942–8952.

(36) Bentley, C. L.; Kang, M.; Maddar, F. M.; Li, F.; Walker, M.; Zhang, J.; Unwin, P. R. *Chem. Sci.* **2017**, *8* (9), 6583–6593.

(37) Chen, C.-H.; Jacobse, L.; McKelvey, K.; Lai, S. C. S.; Koper, M. T. M.; Unwin, P. R. *Anal. Chem.* **2015**, *87* (11), 5782–5789.

(38) E, S. P.; Kim, Y.-R.; Perry, D.; Bentley, C. L.; Unwin, P. R. *ACS Appl. Mater. Interfaces* **2016**, *8* (44), 30458–30466.

(39) Snowden, M. E.; Güell, A. G.; Lai, S. C. S.; McKelvey, K.; Ebejer, N.; O'Connell, M. A.; Colburn, A. W.; Unwin, P. R. *Anal. Chem.* **2012**, *84* (5), 2483–2491.

(40) Benck, J. D.; Hellstern, T. R.; Kibsgaard, J.; Chakthranont, P.; Jaramillo, T. F. *ACS Catal.* **2014**, *4* (11), 3957–3971.

(41) Seh, Z. W.; Kibsgaard, J.; Dickens, C. F.; Chorkendorff, I.; Nørskov, J. K.; Jaramillo, T. F. *Science* **2017**, *355* (6321), 146.

(42) Li, J.; Zhan, G.; Yu, Y.; Zhang, L. *Nat. Commun.* **2016**, *7*, 11480.

(43) Li, H.; Tsai, C.; Koh, A. L.; Cai, L.; Contryman, A. W.; Fragapane, A. H.; Zhao, J.; Han, H. S.; Manoharan, H. C.; Abild-Pedersen, F.; Nørskov, J. K.; Zheng, X. *Nat. Mater.* **2016**, *15* (1), 48–53.

(44) Alvarez-Ruiz, B.; Gomez, R.; Orts, J. M.; Feliu, J. M. *J. Electrochem. Soc.* **2002**, *149* (3), D35–D45.

(45) Kleijn, S. E. F.; Lai, S. C. S.; Miller, T. S.; Yanson, A. I.; Koper, M. T. M.; Unwin, P. R. *J. Am. Chem. Soc.* **2012**, *134* (45), 18558–18561.

(46) Perry, D.; Page, A.; Chen, B.; Frenguelli, B. G.; Unwin, P. R. *Anal. Chem.* **2017**, DOI: 10.1021/acs.analchem.7b03543.

(47) Li, Q.; Xie, S. B.; Liang, Z. W.; Meng, X.; Liu, S. J.; Girault, H. H.; Shao, Y. H. *Angew. Chem., Int. Ed.* **2009**, *48* (43), 8010–8013.

(48) Hu, J.; Yu, M. F. *Science* **2010**, *329* (5989), 313–316.

(49) Grilli, S.; Coppola, S.; Vespini, V.; Merola, F.; Finizio, A.; Ferraro, P. *Proc. Natl. Acad. Sci. U. S. A.* **2011**, *108* (37), 15106–15111.

(50) Arcadia, C. E.; Reyes, C. C.; Rosenstein, J. K. *ACS Nano* **2017**, *11* (5), 4907–4915.

(51) Novoselov, K. S.; Geim, A. K.; Morozov, S. V.; Jiang, D.; Zhang, Y.; Dubonos, S. V.; Grigorieva, I. V.; Firsov, A. A. *Science* **2004**, *306* (5696), 666–669.

(52) Bard, A. J.; Faulkner, L. R. *Electrochemical Methods: Fundamentals and Applications*, 2nd ed.; Wiley: New York, 2001; p 833.